



OKOLAB MM DRIVER

Okolab Driver for MetaMorph application

Manual

This page was left blank

Index

Index

1	INTRODUCTION.....	4
2	INSTALLATION.....	4
3	METAMORPH CUSTOM DRIVER.....	4
4	DEVICES CONFIGURATION.....	5
5	METAMORPH CONFIGURATION.....	6
6	USAGE.....	11

1 Introduction

The Okolab MM Driver allows to control Okolab devices from MetaMorph software. It allows to change setpoints directly from MetaMorph application and storing significant values in the metadata of each acquired image.

2 Installation

Download Okolab MM Driver Setup here:

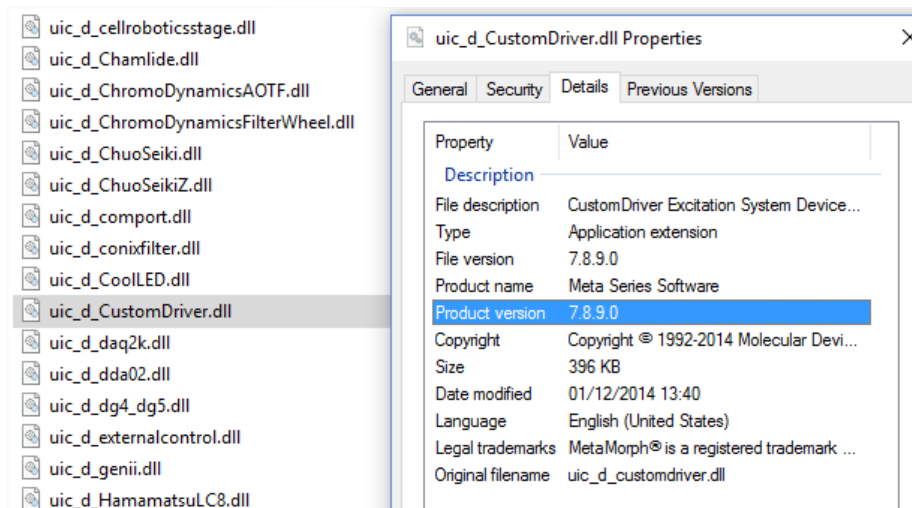
<http://www.oko-lab.com/public/Okolab MM Driver/Okolab MM Driver Setup.exe>

Then run the **Setup** and follows the instructions.

3 MetaMorph Custom Driver

Make sure to have at least version 7.8.9.0 of **uic_d_CustomDriver.dll**.

1. Go to MetaMorph installation path (e.g. C:\MM)
2. Right click on **uic_d_CustomDriver.dll** and select **Properties**.
3. Open **Details** section



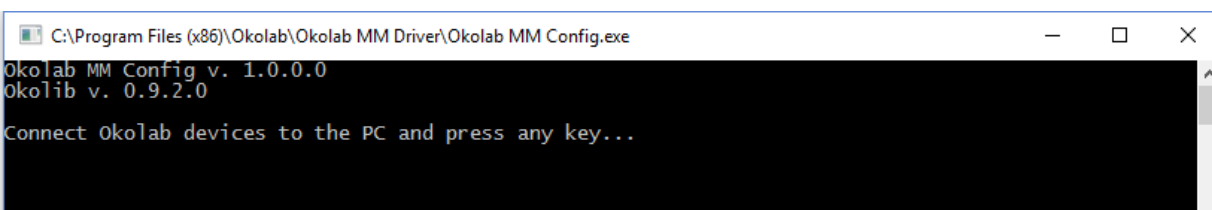
If **uic_d_CustomDriver.dll** version is lower than 7.8.9.0, replace it with the one installed in the **Custom Driver** folder in **Okolab MM Driver** installation path (by default, C:\Program Files (x86)\Okolab\Okolab MM

Driver). Make yourself sure to use the right version of the DLL (32-bit or 64-bit), according to your MetaMorph setup.

4 Devices configuration

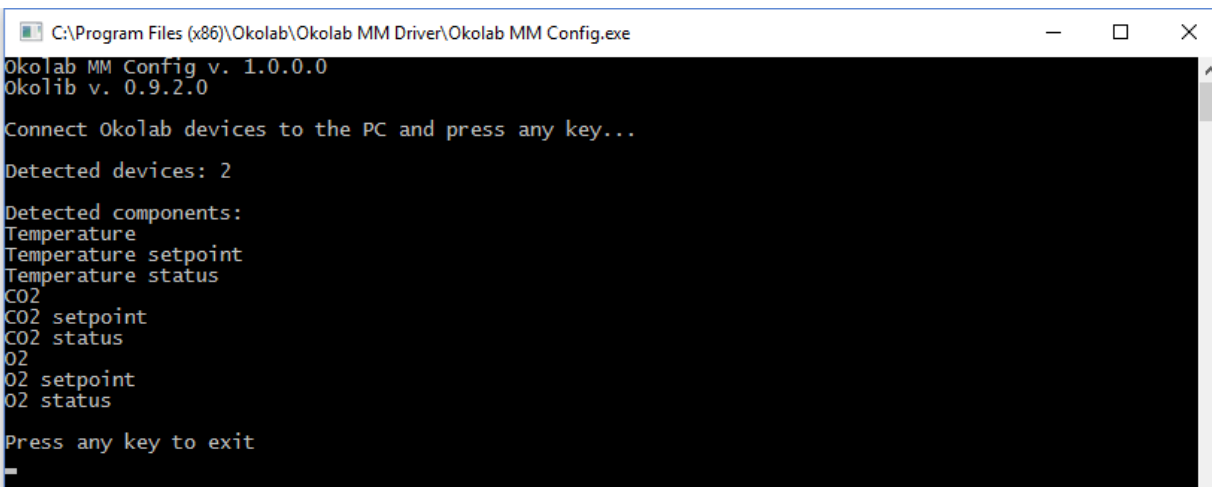
Before running the **Okolab MM Config** application, make sure that Okolab devices are connected to the PC, via USB or RS-232, turned on and installed by Windows. If you have more than one controller, please plug the USB cable to the unit which is directly connected to the Oko-Touch.

Then, run the **Okolab MM Config** application and follow the instructions.



```
C:\Program Files (x86)\Okolab\Okolab MM Driver\Okolab MM Config.exe
Okolab MM Config v. 1.0.0.0
Okolib v. 0.9.2.0
Connect Okolab devices to the PC and press any key...
```

If one or more devices are detected, available components will be listed:



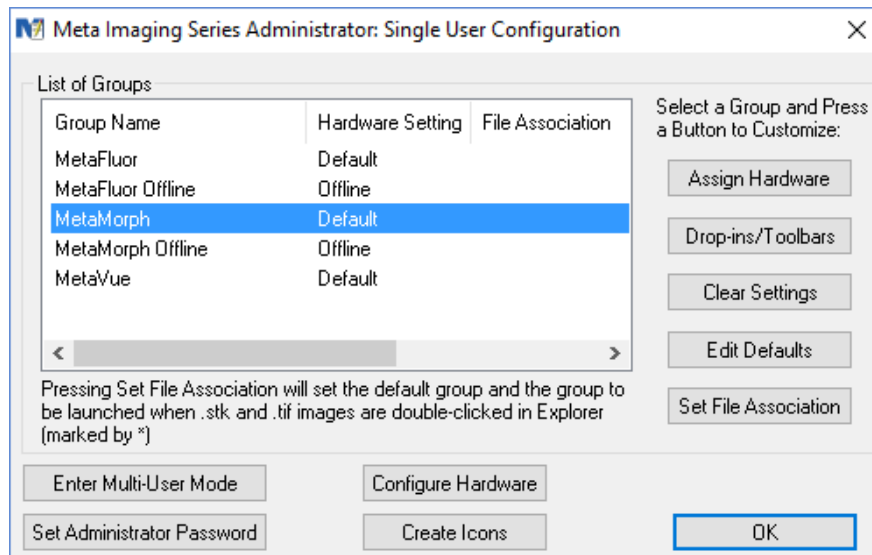
```
C:\Program Files (x86)\Okolab\Okolab MM Driver\Okolab MM Config.exe
Okolab MM Config v. 1.0.0.0
Okolib v. 0.9.2.0
Connect Okolab devices to the PC and press any key...
Detected devices: 2
Detected components:
Temperature
Temperature setpoint
Temperature status
CO2
CO2 setpoint
CO2 status
O2
O2 setpoint
O2 status
Press any key to exit
```

These components will be listed in MetaMorph application too.

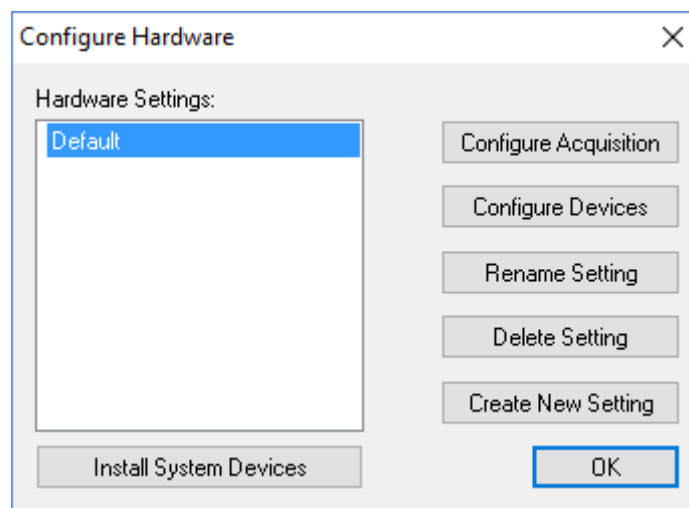
Okolab MM Config saves the configuration info into a file named **Okolab MM Driver.cfg**, located in %LOCALAPPDATA%\Okolab\Okolab MM Driver. To open this folder, press Windows Start button, write run and launch the **Run** program. Then type %LOCALAPPDATA%\Okolab\Okolab MM Driver and press **Enter**. To launch the **Run** program, you can also press (Win + R).

5 MetaMorph configuration

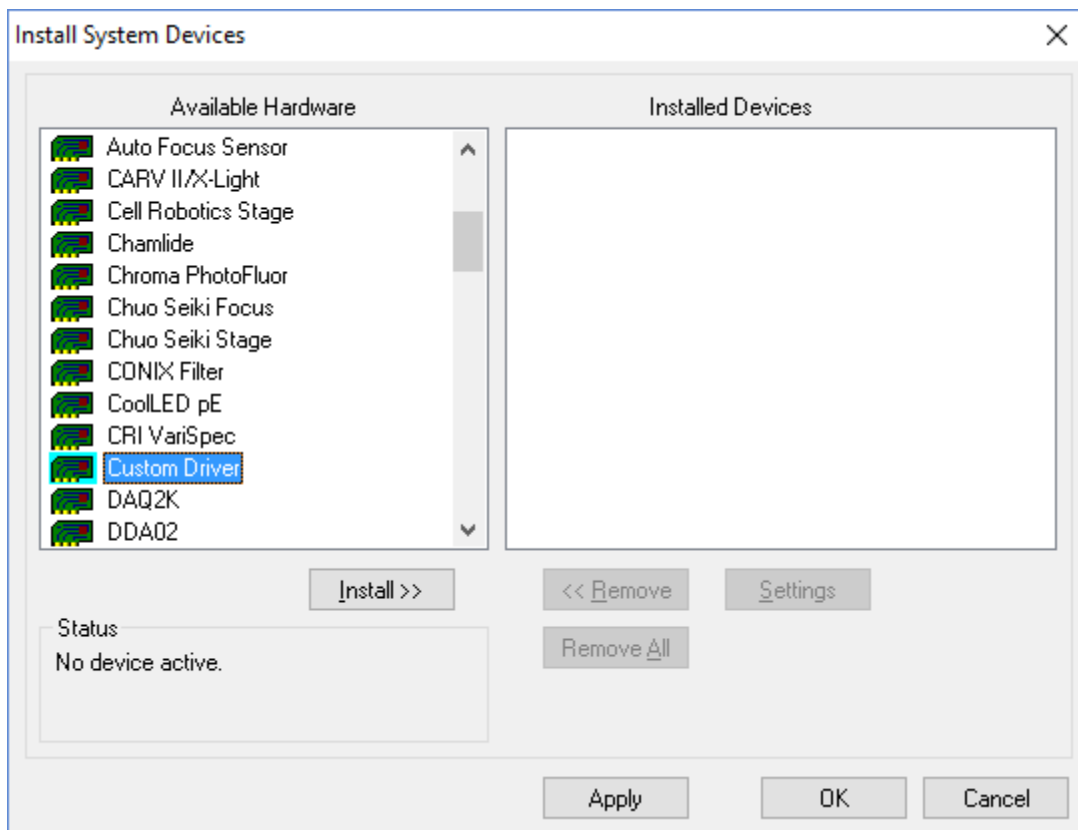
1. Connect all Okolab devices, via USB or RS-232, to the PC.
2. Start **Meta Imaging Series Administrator** application (mmadmin.exe).



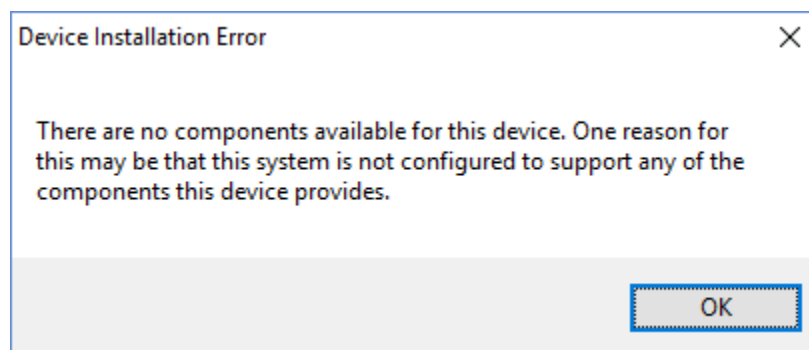
3. Click **Configure Hardware** button.



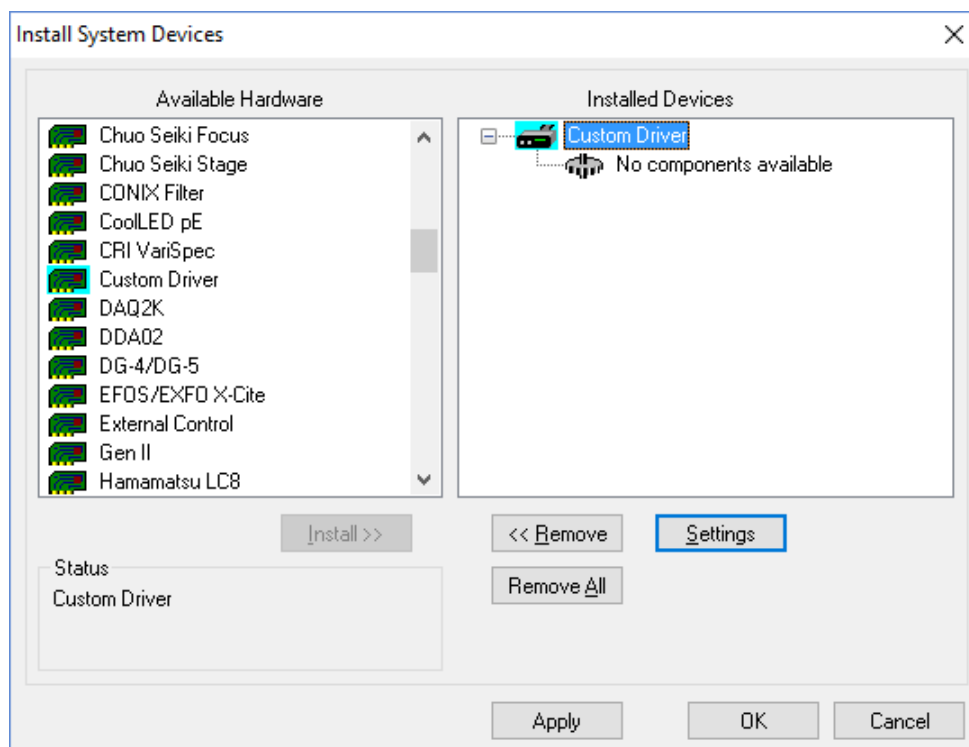
4. Click **Install System Devices** button.
5. Scroll down the left side panel and select **Custom Driver**.



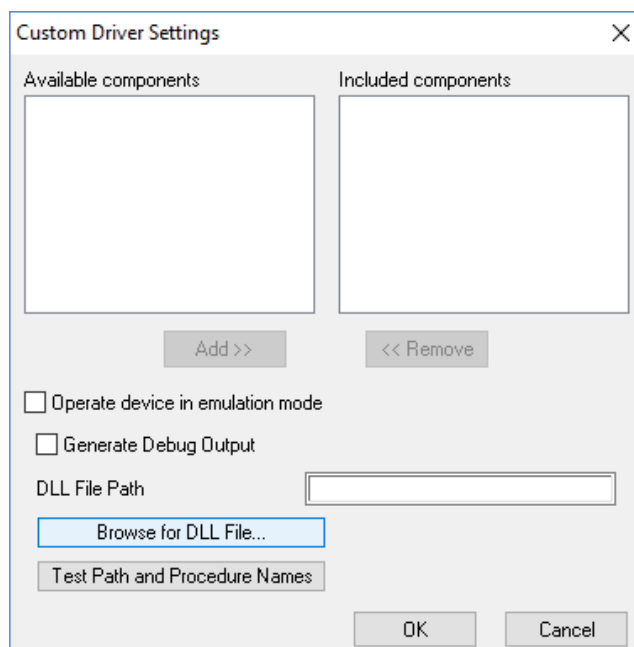
6. Press **Install >>**. A warning message should appear; ignore it and press OK.



7. Select **Custom Driver** on the right and press **Settings**

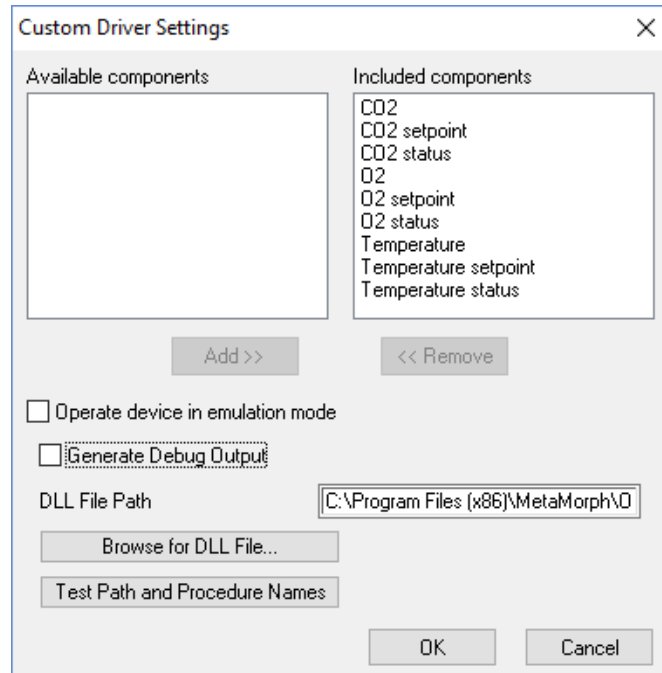


8. Click **Browse for DLL file...**, select MetaMorph install folder and select **Okolab MM Driver.dll** file.

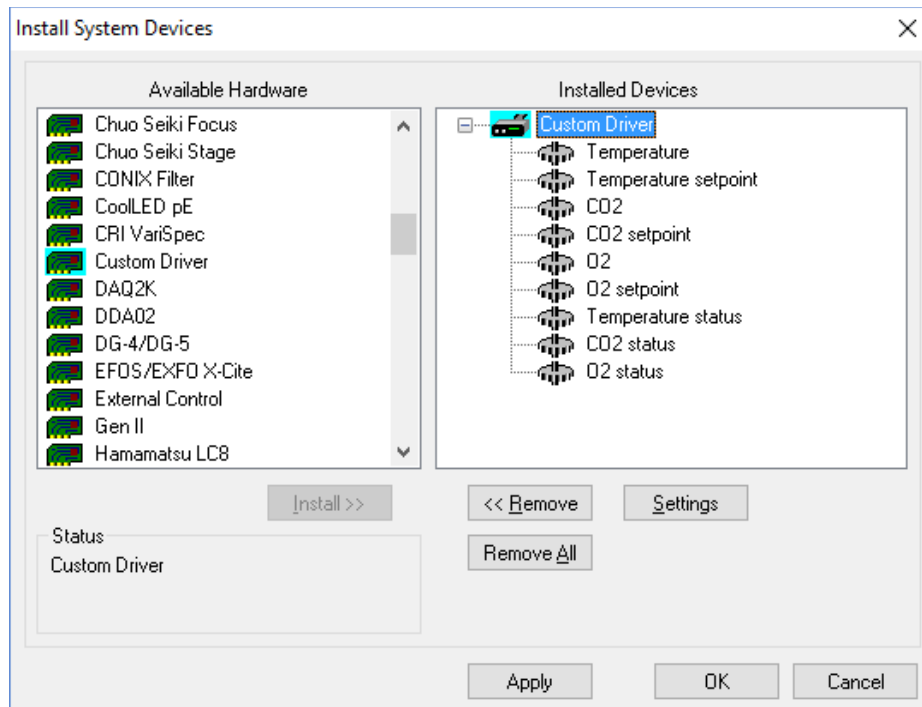


NOTE: it is better to manually copy the Okolab MM Driver.dll to your local MetaMorph installation folder (default C:\MM). A total of four files are needed: *okolib.db*, *okolib.dll*, *libserialport.dll* and *Okolab MM Driver.dll*. These files are in the Okolab installation folder (by default, C:\Program Files (x86)\Okolab\Okolab MM Driver\DLL\64-bit or 32-bit according to your MetaMorph version) and must be copied to the main Metamorph folder.

9. Now Okolab components should be listed

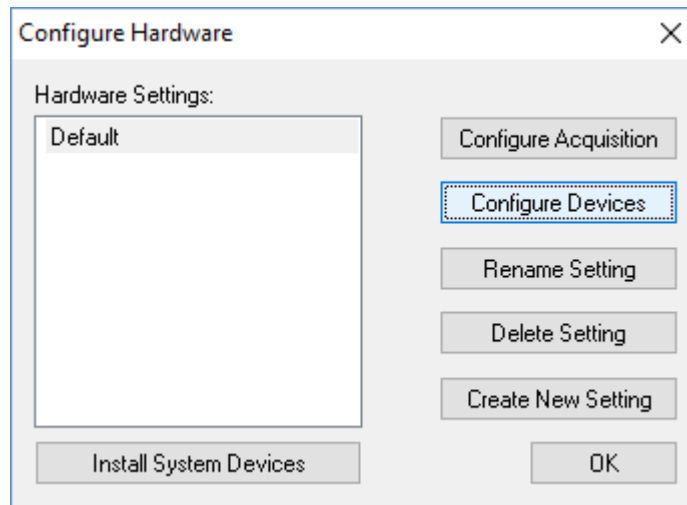


10. Press **OK** to close the **Custom Driver Settings** window. Okolab components should be listed In **Install System Devices** window.

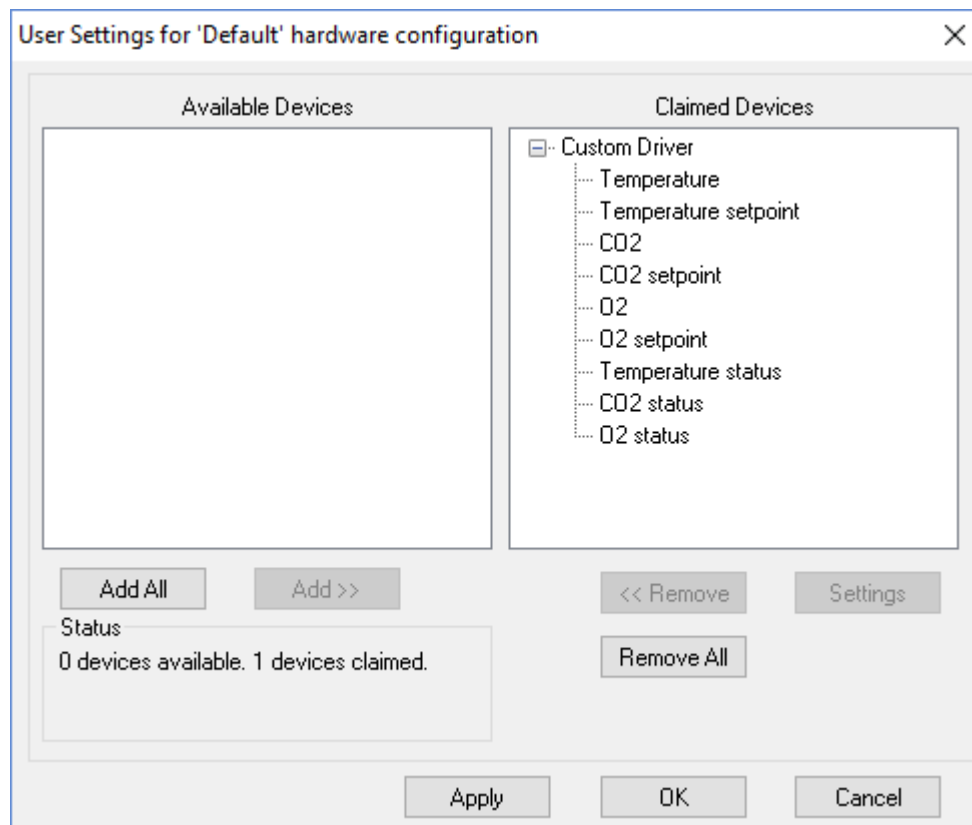


11. Press **Apply** and then **OK**

12. In the **Configure Hardware** window, click **Configure Devices**



13. Select Custom Driver from Available Devices table and click Add >> to move the components to Claimed Devices

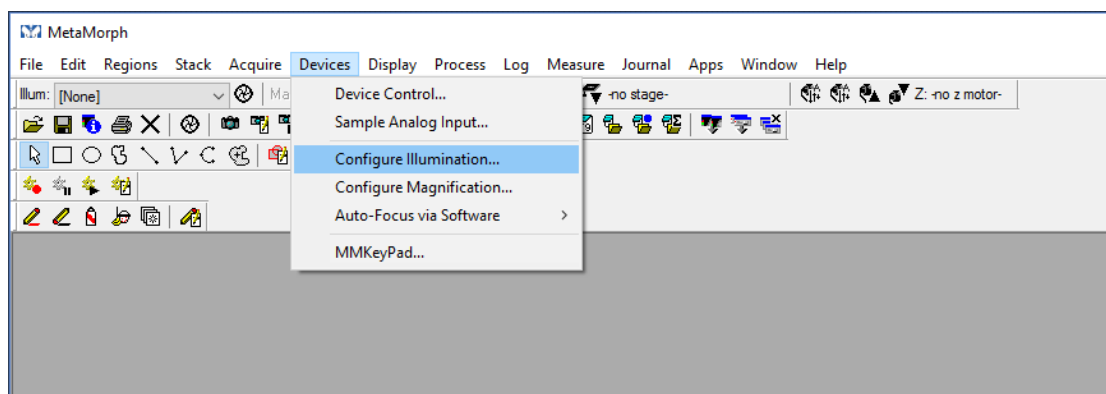


14. Click **Apply** and then **OK**

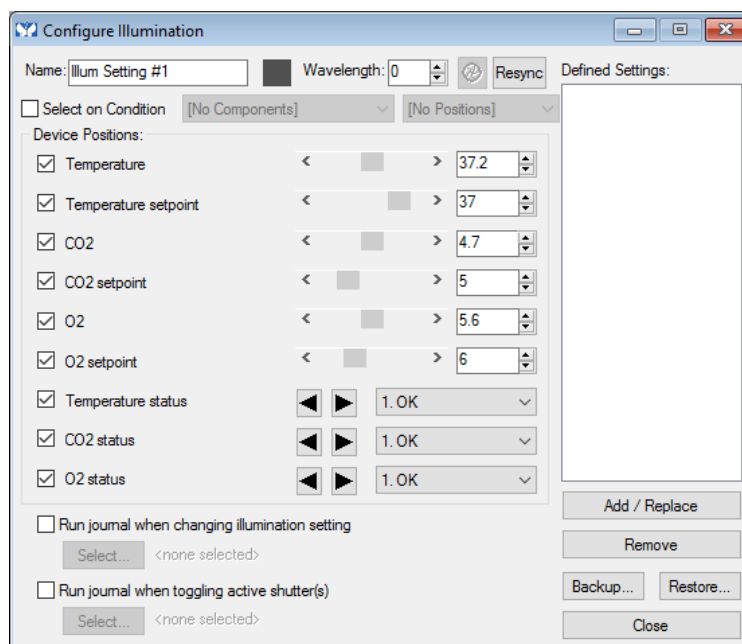
15. All these steps need to be repeated if you add or remove any Okolab devices

6 Usage

1. Start MetaMorph application.
2. Select **Configure Illumination** from **Devices** menu



3. You will see all the available Okolab parameters



4. These parameters will be also added to the Image Info of each acquired image (**Edit > Image Info**)

